

Brad® HarshIO 600 ePN with Fast Start-Up

molex®

HarshIO IP67 Ethernet Modules for PROFINET* featuring Fast Start-Up technology deliver significant operational advantages of speed and versatility for industrial robotic tool-change applications

PROFI
NET®

PIV CERTIFIED
PROFIBUS • PROFINET

Features

IP67-rated, shock and vibration tested for direct on-machine mounting and harsh environments

4- or 5-pole 7/8" connectors

Accepts standard M12 threaded or Brad® Ultra-Lock® connectors

Standard hole housing pattern allows for interchangeability with popular I/O modules

Choice of fixed I/O module versions

Visible diagnostic LEDs provide maintenance personnel with the ability to easily determine I/O, module and network status

Short-circuit diagnostics per I/O channel

PROFINET* IO according spec. v2.3

Complete module and channel diagnostics supported via PROFINET*

Scrolling 4 characters status display for IP addressing and modules status

IP addressing: DCP or static (through web interface)

Built-in 2-port Ethernet switch, 10/100 Mbps auto-sensing and crossover capability

Built-in web server for configuration, diagnostics, and GSD download

Fast Start-Up capability to start and operate the module in less than 500ms

Grounding isolation between input/logic ground and output ground for application using safety relays



PROFINET* HarshIO Module

Applications

Factory Automation

All industries using robots for repetitive tasks with precision

Machine tool industry

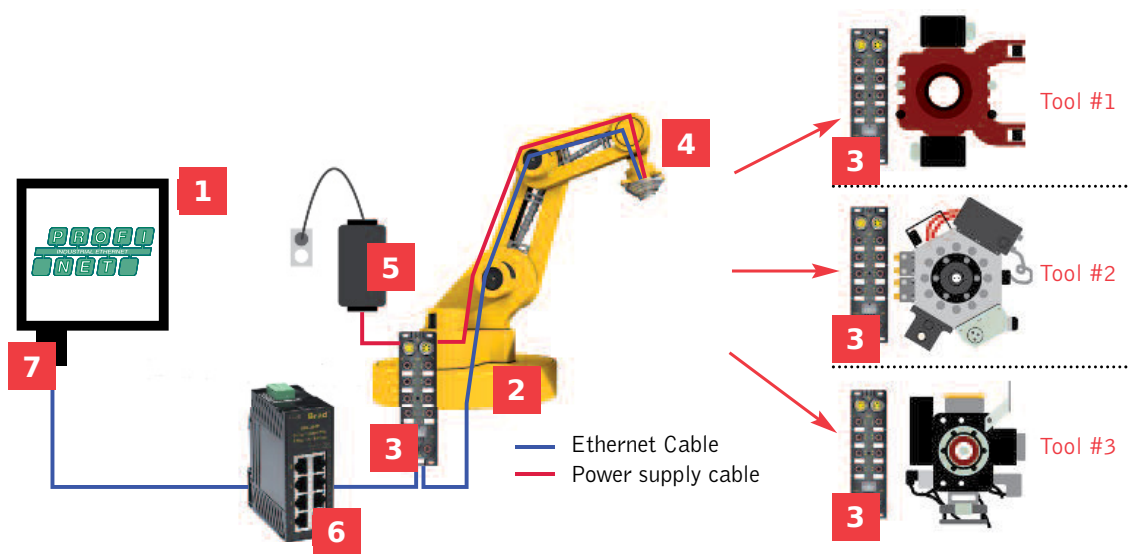
Automotive

Material handling systems

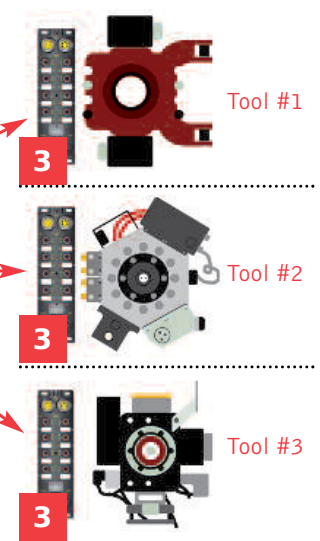
Filling & packaging machines

Steel industry

- 1 Cabinet with PROFINET* PLC
- 2 Robot
- 3 HarshIO ePN modules
- 4 Tool Changer
- 5 24V power supply
- 6 Ethernet Switch
- 7 RJ45 to M12 adapter



Typical System Architecture



Brad® HarshIO 600 ePN with Fast Start-Up

molex®

Specifications

I/O Configurations:

- 16x inputs
- 12x inputs / 4x outputs
- 8x inputs / 8x outputs
- 16x outputs
- 16x User configurable Inputs/Outputs

I/O Connectors:

Female, Ultra-Lock™ M12, A-Coded, 5-pole

Bus Connectors:

Male, Brad Ultra-Lock™ M12, D-Coded, 4-pole

Power Connectors:

- Power In: Male Mini-Change®, 4- or 5-pole
- Power Out: Female, Mini-Change®, 4- or 5-pole

Power Requirements:

- Module input power: 24V DC (-15/ +20%)
- Module output power: 24V DC (-15/ +20%)
- 8.0A max per module

Fieldbus Specifications:

- PROFINET* IO-Device (according spec. v2.3)
- Conformance Class B (CC-B)
- I/O update rate up to 1ms
- Data access:
 - Cyclic (for I/O data)
 - Acyclic (for read/write alarms, module configuration and diagnostic)

PROFenergy
SNMP V1/V2/V3

LED INDICATORS

Module and Input Power (UB):

- Green – power present
- Off – power not connected

Output Power (UL):

- Green – power present
- Off – power not connected

4-Digit Display:

Provides information about PROFINET* name, I/O Status, PLC connection, etc.

- LLDP: Yes (Sender/Receiver)
- MRP: Yes (Client)
- Fast Start-Up: Yes
- I&M: Yes
- Upload GDS file: Yes (via integrated web)
- IP Address Capabilities: DCP (default) or Static
- Easy Replacement (based on DCP/LLDP)
- Ethernet Switch:
 - 2-port
 - 10/100 Mbps (auto-negotiation), full duplex
 - Storm Protection

Input Type:

- Compatible with dry contact, PNP
- 2 or 3-wire sensors
- Electronic short circuit protection

Input Delay:

- 2.5ms default or configurable through PROFINET*

Input Device Supply:

- 140mA per port at 25°C

Output Load Current:

- Maximum 2.0A per channel
- Electronic short circuit protection
- Maximum Switching Frequency: 200Hz

Housing Dimensions: 600 x 220 x 20mm

Mounting Dimensions:

- 37.50mm horizontal on centers
- 210mm vertical on centers

Input/Output (Ix/Ox):

- Green – input/output on
- Red – input/output fault
- Off – input/output off

Ethernet Link (Port 1 and 2)

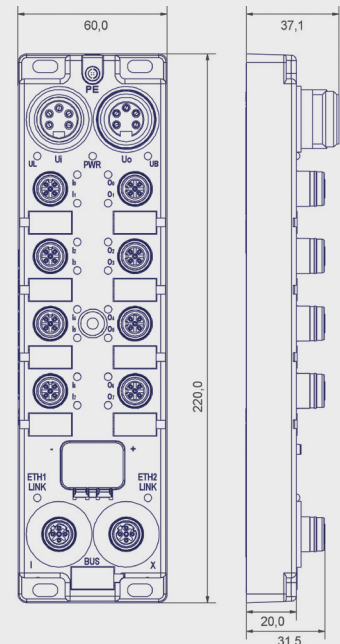
- Solid Green – Ethernet link, 100 Mbit/s, no activity
- Flashing Green – Ethernet link, 100 Mbit/s, activity
- Solid Yellow – Ethernet link, 10 Mbit/s, no activity
- Flashing Yellow – Ethernet link, 10 Mbit/s, activity

Center hole

- Operating Temperature: -25 to +70°C
- Storage Temperature: -40 to +90°C
- RH Operating: 5 to 95% non-condensing
- EMC: IEC 61000-6-2
- Protection:
 - IP67 according to IEC 60529, NEMA 6P
- Vibration:
 - 7g (15.7Hz to 500Hz), 3 axis
- Mechanical Shock:
 - 10g, 11ms, 3 axis
- Thermal Shock: MIL-STD-1344A

Approvals:

- CE, UL, cUL, RoHS, REACH
- PROFINET* conformance tested



Ordering Information

Order No.	Engineering No.	Module Size	Power Connector	Ports	I/O Connectors	I/O Configurations		I/O Channels
						Input	Output	
112095-5052	TCDEP-8D0P-DYU-G	Classic 60mm	7/8" 4-pole	8	M12 Ultra-Lock®	16	0	PNP
112095-5053	TCDEP-888P-DYU-G					8	8	
112095-5054	TCDEP-8B4P-DYU-G					12	4	
112095-5055	TCDEP-80DP-DYU-G					0	16	
112095-5114	TCDEP-8YYX-DYU-01					16x I/O User Configurable		
112095-5048	TCDEP-8D0P-D1U-G		7/8" 5-pole			16	0	PNP
112095-5050	TCDEP-888P-D1U-G					8	8	
112095-5051	TCDEP-8B4P-D1U-G					12	4	
112095-5049	TCDEP-80DP-D1U-G					0	16	
112095-5115	TCDEP-8YYX-D1U-01					16x I/O User Configurable		

www.molex.com/link/harshio.html

*PROFINET and the PROFINET logo are registered trademarks of PROFIBUS International